

STAMPS AND TONGS

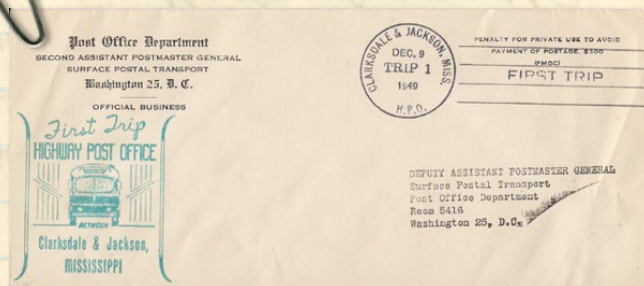
The E-mail Newsletter
of the Dallas-Park
Cities Philatelic
Society

<http://dpcps2010.webs.com/>

November 2010

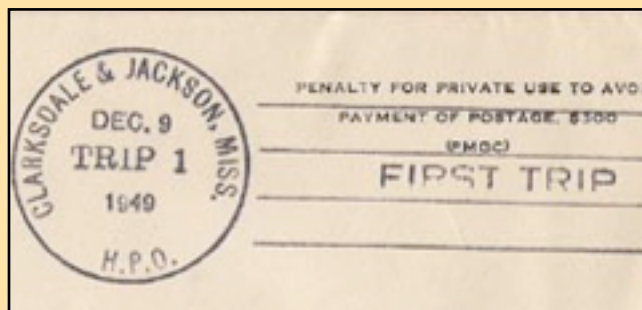
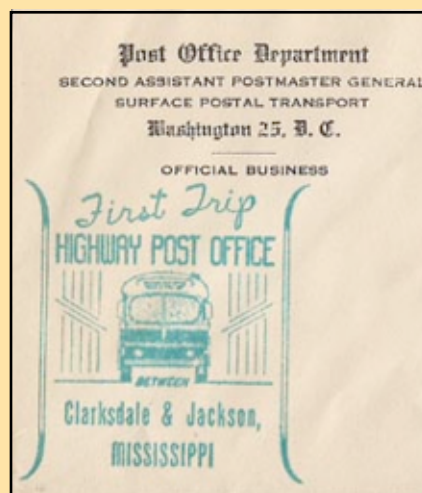
IN THIS ISSUE

Letter From the Editor	2
Special Invites	4
Treasure's Report	4
Holiday Dinner Invite	5
Club Report	7
Paris "City of Lights" and Much More.....	9
Highway Postal Office	10



What Are
HPO's?

See Page 6



π°

The Dallas Park-Cities Philatelic Society is a chapter member of the Texas Philatelic Association (TPA Chapter #40) and the American Philatelic Society (APS# 0835-068806).

The purpose of the club is to provide social interaction with local philatelist, from the newest collector to those who have been collecting for a lifetime. The club members interest run the entire spectrum of philately. We meet the second and fourth wednesday of the month. Our meetings officially start at 7:30 pm but many member arrive at 7:00 pm to trade or buy duplicates. The first meeting of the month is normally a 30-40

minute presentation of some aspect of philately. The second meeting of the month is usually a short business meeting and a 15 min presentation by a member on his or her collecting interests. This is usually followed by a short mini-auction. Once a quarter there is larger auction of about 70 items

Benefits of membership includes access to the most current Scott Volumes free of charge to borrow. ability to auction your duplicates in our mini-auctions, or in our larger quarterly auctions, as well a wealth of collecting knowledge in our memberships diverse collecting interests.

A membership application can be located on our website or directly here: ([application](#)). Dues are \$12.00/year.

Current Officers

President: Harry Pederson
Vice-President: Open
Secretary: Samuel Phillippi
Treasure: Jack Urish
Past President: Rod Gabel

Current Board of Directors:

Dr. Harold Boehning
Scott Hunter
Jerold Plumb

Website:

<http://dpcps2010.webs.com/>

LETTER FROM THE EDITOR

You will have to excuse the tardiness of this edition. My beloved iMac finally kicked the bucket and I had to buy a new iMac a few months earlier than I had intended.

I have also been out of town to San Francisco to the National Academy of Pediatrics Annual Meeting this month. For those of you that are familiar with San Francisco, I made a visit to *The United States Stamp Company* on Bush Street after I had seen an ad in Linn's that it was up for sale. I asked Warren Sankley, the current owner, if he had found a buyer for the oldest stamp store west of the Mississippi.

He said he hasn't, but has decided not to sell at this point. If you're ever in San Francisco and collect worldwide you have to stop by and take a look at some of his collections for sale. He has great little collections to start of any new collection. I got roped into buying a British China stamp collection.

I also recently attended the National Precancel Stamp Society Meeting in Burlington, Vermont and the Texas Precancel Society meeting



in Grapevine, Texas. The common comment I heard at both meetings was how young I was and how good it was to see young blood (I'm 37 if you're wanting to know). I don't usually consider myself young these days. However, I do have to admit I feel younger than the average collector these days. That doesn't bother me though or stop me from doing something I find interesting. I have had several philatelist tell me they are worried about the hobby is dying out. I usually ask what have you done to make the hobby accessible to a new generation? Have you given a discount to a new collector or have you tried to convince them to buy something that you know isn't in huge demand in an attempt to get rid of something you don't want anymore. (cont. on page 3)

LETTER FROM THE EDITOR

(cont. from page 2) Have you gone out of your way to say hello to someone that looks new or scared to ask a question? Or do you lose your patience when they say they are looking or can't tell you in perfect terminology what they are collecting.

I started stamp collecting as a kid but stopped collecting when the price got too high for my allowance. I returned in the last five years ago when my sport playing days were too much for my body. To be honest if I was a thin skinned person I probably would have quit collecting a long time ago. In the past few years I have heard so many comments of people disapproving of what I collect.

In the last 3 years I have focused on a single stamp collection of Scott #803 (the orange 1/2 cent prexy), because it was a common stamp that can be collect thru different genres of philately (full sheets, plate blocks, First Day Covers, Precancel bureaus, Precancel Town&Type, Patriotic covers, WWII covers, Highway Postal Offices, Railroad Postal Offices, Navel Covers, Army Post Offices, Postal History, advertising, and even as a Canal Zone over print)

I have thoroughly enjoyed learning about philately in ways I would have never imagined if I had continued to collect World-wide. I have joined several stamp collecting organizations to learn more about cancelations and covers I have collected. I have met a lot of very supportive and helpful people in the past few years. They have nurtured and ignited a love of collecting I hadn't

had before. To them I am very grateful.

So my best response to what you can do for the hobby is to be supportive. Think before you speak. If you don't collect US because you think they are common and not worth it. Don't mention that. Introduce them to someone who does. If you don't collect FDC because you think they are worthless don't say that, introduce them to the First Day collectors club so they can meet collectors like themselves. Remember, that as stamp collectors we are all "weird" to the average person. Don't make someone feel even weirder because they don't collect what you collect. Treat a young collector like your child or protégée. Support them, guide them, and nurture them. Don't embarrass, or humiliate a fellow collector. Help them where there interest may lay.

Taking my own advice...I don't collect classics and don't have new

revolutionary research to give you each month. But each month you will find a section on classic stamps, or terminology for the new collector. For the more experienced collector I will write on topics about adjusting to the digital age of collecting. So you will find a section on computers, internet bidding, or other new technology used to acquire, collect, or organize your collection

I still need help from you all to submit articles to make this a useful newsletter for our club. A couple of members have stepped up to give me things to publish. I hope more of you will take the time to do the same. It doesn't have to be a piece of great literature, just something you're interested in. I hope you find something useful in the upcoming issues.

-Frank J. Sloan, MD



First Trip Highway Post Office (HPO) on Jul 30th 1955 between Aberdeen, S.D to Baker, Montana. Cancellation shows the Sculpture of Crazy Horse in the Black Hills of SD

Your Invited

To hear our featured speaker,
Mr. Charles Shreve at our next meeting on Wed.
Nov. 10th at 7:30pm at the Edgemere. His topic
will be *"Questions That a Philatelic Auctioneer Hopes You
Don't Ask"*

Mr. Shreve has been in the rare stamp business for
over 40 years. He is a member of the Board of
Governors for the New York Collector's Club,
serves on the Board for the Philatelic foundation
and holds a seat on the Council of Philatelists
for the Smithsonian's National Postal Museum.
Currently he is President of Spink Shreves
Galleries, Inc.

Refreshments will be served

The Mid-Cities Stamp Club
would like to invite you to
attend EXPO 2010 at the
Grapevine Convention
Center, Grapevine, Texas
Saturday November 13 (10
am-5 pm) and Sunday
November 14 (10 am-4 pm).

DPCPS Treasure's Report Oct 1, 2010

Beginning Balance (checking account)	\$1,953.69
Income (club sales)	510.00
Balance (checking account)	\$2,979.88
Expenses	_____00
Balance (checking account)	\$2,979.88
Money Market Fund	<u>6,536.31</u>
Total (both checking & money market accounts)	<u>\$9,516.19</u>



2010 DPCPS HOLIDAY DINNER INVITATION



December 8th, 2010

Time: 6pm

*Location: Edgemere 8523 Thackery St
Dallas, Tx*

*Cost: \$10 for Members \$25 for Guests
Deadline is Nov 10th, 2010*



*2010 DPCPS Holiday Dinner
Reservation Form*

Date: December 8, 2010

Time : 6pm

Cost: Members \$10

Guests \$25

Name of Member: _____

Name of Guest: _____

Meal Selection:

Member

- ☐ Pork Tenderloin *or*
- ☐ Chicken Cordon Blue *or*
- ☐ Poached Salmon

Guest

- ☐ Pork Tenderloin *or*
- ☐ Chicken Cordon Blue *or*
- ☐ Poached Salmon

Deadline for reservations is Nov 10th, 2010

Please return to Dr. Boehning at the next DPCPD Meeting or
mail it to:

*Harold C. Boehning, MD
8523 Thackery St #3204
Dallas Tx 75225-3910*

Please make checks payable to : Dallas Park-Cities Philatelic Society

Amount Paid: _____ ***Date:*** _____

CLUB REPORT

The program on August 12th was a topical talk on "Military Uniforms On Stamps...almost including Israel" by Paul Witthoef. Originally prepared as an invited program for the July meeting of Dallas chapter of the Society of Israel Philatelists (SIP), Paul showed a sampling of worldwide and U.S. military uniform stamps and covers, indicating that it often takes research away from the stamps themselves to make sense of the details on the stamps. For example, why is General Monash shown on Australia #390 with an electric transmission tower? (because after he left the Army, he headed a state power commission), and why does

uniforms on stamps were often monarchs (such as Belgium #1 of 1849) and later, many colorful dictators. Our very recent U.S. series has honored four soldiers (including Audie Murphy of Texas), four marines, and four sailors (including Dorie Miller of Texas). While the United States has produced scores of military uniform stamps for various commemorations, Israel has produced a very small handful in its much shorter (60+year) national history, preferring to show symbolic art on annual Memorial Day issues. [Paul is a retired Lt.Col., USAF Reserve, aircraft maintenance ofcr., and lifelong



famous pilot-astronaut Major Yuri Gagarin (e.g. Albania # 604...have no pilot wings over his left pocket?) because Russian pilots wear wings over on the right side. The earliest military



Why is General Monash shown on Australia #390 with an electric transmission tower?

CLUB REPORT

Our program on September 8th was a delightful “*Philatelic Trivia Contest*” by DPCPS president Harry Pedersen, including twenty challenging questions, plus five 'tie-breakers'...which in the end were not needed to determine the prize winners, since the basic Trivia questions were tough enough, and no ties developed. Harry's 2010 quiz had a mix of U.S. and Foreign, geographical and historical, basic philatelic knowledge and "read it in Scott"

The top scorer at 17 correct answers was Chris Shortwell (a new member!) followed by Jack Urish with 16, and Sam Phillippi with 14 correct answers.

There was also some competition for the lowest admitted score, and DPCPS director Scott Hunter worried aloud that his 7 correct would take it . . . but a veteran member admitted a score of 4 correct ! Despite being an accomplished philatelist and publisher of our Directory, this unnamed individual said "Hey, I just did not know all of *these* trivia, and I even missed on my outright *guesses*! "

Members applauded at the conclusion, and encouraged Harry to "take it on the road" and share the quiz with other area stamp clubs. Which is why none of the questions are reproduced here, except one.

For the final 'tie-breaker' question, Harry showed a bicolor Guam Guard

Mail stamp (Scott # M3) and asked, with four multiple-choices, “Which bay on Guam is shown, with sailboat, on that stamp ?”...and then proceeded to show personal photos of the view of that lovely bay from his quarters, when stationed on Guam , as a sailor! [*Harry is a retired Chief Petty Officer, U.S. Navy, Chief Electronics Technician.*]

There were also interesting 'Show & Tell' items circulated, including a set of overprinted Hungary from the short-lived uprising of 1956, listed in Michel catalog (but not Scott), brought by Jack Urish, and a nineteenth-century cover routed to Fort Davis, Texas brought by Larry Davis, addressed to Col. Benj. Grierson, commander of the 10th Cavalry regiment of frontier 'Buffalo Soldier' fame. ----- PwM



“Which bay on Guam is shown, with sailboat, on that stamp ?”

Paris- “City Of Lights” and Much More

TOM SIEGEL

Last Fall, for a 70th birthday gift , I visited the Normandy Battlefield and American Cemetery.

The two week trip included a week in Paris and a week sail down and back on the Seine. Hardly enough time to visit the many sights, but it did allow me to make two visits to the Paris Stamp Market.

The Market is an outdoor bourse held on Saturdays, and I believe also on Sundays. Located on Ave Gabriel, one block off of , and parallel to, Ave Des Camps-Elysees, it is easy to find. The Metro stop is Place Clemenceau. Ave Gabriel is within a park. The bourse is positioned along a wide sidewalk and runs a length equivalent to two city blocks.

When you arrive, a broad smile will cross your face when you gaze down the pedestrian road way at the 30 or

At the far end of the street a there was a dealer who offered only covers. He had numerous Euro boxes, several of which were crammed full of material from World War I.

For me a treasure trove and the creation of a sub collection of WWI covers from France to complement my U.S. cover collection.

The following material is representative of my numerous acquisitions :



One of numerous varieties of a postal card issued to members of the French military. Postmarked 25 April 1916



What appears to be a standard for of postal card issued to the members of the military



Pertains to a Prisoner of War - appears to be a person captured by the French



One of numerous examples of postal cards bearing a regimental postmark. I acquired many and created a sub set collection.



more booths. The picture, taken mid morning, is representative of the selection of material offered by the dealers: collections many in the 400 Euro price range (a Euro is today about \$1.28); packets; individual sets and singles; and the "Euro box " of covers. Very similar to the variety found in our stamp bourses.

The merchandise is predominately from European countries and former French Colonies. Material from North America is very limited, and when found is Gibson, not Scott catalogued. Few dealers speak English. They are friendly, accommodating and communication is not difficult. I believe they accept only Euros in payment.

My collecting interests include non philatelic covers that are unusual, and particularly those that have a historical connection.

WHAT IS AN HPO?

If you were born after 1963 and the invention of the zip code system, you may have never heard of a Highway Postal Office (HPO).

With the decline of the railroad system to the rural areas of the country in the early part of the 20th century, the postal service was in need of an alternative to the railroad sorting systems that had been the backbone of mail sorting and delivering.

There had been earlier local



FDR depositing a letter in the mail slot of the first Highway Post Office bus in 1941

experimentation of using mobile delivery units. There was a Milwaukee's Auto Car Mail Service in 1907-1908, and in Washington DC a Christmas Post Office Truck in 1919 and 1920. There had also been preliminary test routes in Chicago, West Virginia and Maine. Though none of these are considered part of the HPO era.

The first HPO route was started February 10, 1941 from Washington, DC to Harrisonburg, VA. However due to the war the next two routes were not added till 1949. One from South Bend, IN to Indianapolis, IN and the second between San Francisco to Pacific Grove CA.

Though initially all routes were government run by 1955 the operation had been out-sourced to private companies. In total 410 HPO routes were established. Many of these routes lasted less than a year. The HPO era was from 1941 to 1974 when

the last route between Cleveland and Cincinnati, OH was closed.

The death of the HPO system came when Presidentially appointed Advisory Board of the Post Office Department in 1962 recommended giving priority to development and implementation of

working coding system for mail. The type of mail being delivered by the Post Office Department had been changing for many decades. By 1963 personal correspondence had given way to business mail which was now 80% of the mail moved by the Post Office.

This change in the type of mail meant a centralized system of sorting the mail made more economical and logistical sense.

Though the HPO routes ended in 1974, the HPO bus was still used at special events as an exhibition service. The mail was canceled with an HPO cancel then transported to a nearby postal center for delivery. The SEPAD show in 1978 and the NAPEX in 1983 had HPO exhibits. As well as the Olympic games in Los Angeles in 1984 and the Atlanta game in 1996 had HPO services.

HPO COVERS

The holy grail of HPO collectors is a commercial HPO cover. The reason is that they are so rare. Most HPO canceled mail is philatelic mail. Only mail that was canceled on the bus would have an HPO cancel. Since these were mobile *Continued on Page 11*



In total 410 HPO routes were established. Many of these routes lasted less than a year.



Continued from page 10

units people rarely were able to post a letter thru the slot on the bus. Most mail was canceled at a brick and mortar office and transferred to the HPO for sorting for delivery never noting it had passed thru a HPO.

First trip and second trip HPO mail was always philatelic. Each trip on the HPO route was numbered. The first trip was in the main direction and the return trip was numbered trip 2.

The postmark was very similar to their Railway counter parts. Either HPO or H.P.O. was in the postmark dial along with the route, a date and, the trip number. The cancellation was usually attached to the postmark. They usually consisted of for lines or an oval line cancellation with the letters PTS.

Philatelic covers usually are of the first trip variety. Governmental rubber stamp cachets and commercial first trip cachets exist. The first three routes have the most commercial covers. Route 3 from San Francisco to Pacific Grove, CA has the most known varieties at twenty-two.

The hand-stamped cachets have several different motifs. The main types are a map showing the route, history



comparison to the pony express, local attractions (ex. tobacco in VA) or the HPO bus itself.

Collectors also collect examples signed by local postmasters or dignitaries.

If you are interested in HPO's you may consider looking in to the Mobile Post Office Society.

They have published a catalog of

all 400 Routes. Doug Clark, PO Box 427, Marstons Mills MA 02648

Sources: *The National Postal Museum, "Bus Mail, Highway Post Offices" by Nancy B.Z. Clark, American Philatelist June 2003*

