

# STAMP & TONGS



(OCTOBER 13, 2018 | VOLUME 64)

We welcome members with all levels of experience, from beginners to advanced membership is open to all persons of good character who are interested in philately.

## IN THIS ISSUE:



## SPARKLING HOLIDAYS

On Oct. 11, 2018, U.S. Postmaster General and CEO Megan Brennan Dedicated New Sparkling Holidays Forever Stamps

The Postal Service issues four new stamps and a souvenir sheet showcasing classic images of Santa Claus painted by famed commercial artist Haddon Sundblom. Each stamp portrays a close-up of Santa's face. The four images featured in the booklet are details from larger paintings created by Sundblom and originally published in ads for The Coca-Cola Company from the 1940s through the early 1960s. Sundblom is the man credited with refining the modern image of Santa Claus.

The souvenir sheet includes a semi-jumbo stamp as part of a wider scene of one of Sundblom's paintings chosen for the Sparkling Holidays stamp booklet. In it, Santa is depicted standing by a fireplace holding a book that lists good boys and girls. Three Christmas stockings hang along a mantel decorated with greens and ornaments. Peering over his glasses, Santa reads a note among the stockings.

A quatrefoil design element surrounded by a metallic gold background encloses the scene. The use of gold metallic ink, the flow of the type, and the organic shape of the border are intended to harken back to the graphic

style of the first half of the 20th century. Art director Greg Breeding designed the souvenir sheet and the stamps.

Santa's legend is based on customs brought to America by European immigrants. St. Nicholas, the Dutch Sinterklaas, was one of Santa's forebearers. He delivered gifts on Dec. 5, the eve of his feast day.

<http://postalemployeenetwork.com/news/2018/08/usps-issues-sparkling-holidays-stamps-and-souvenir-sheet/>

By Rick Owens on August 29, 2018





## STUFF ON STAMPS

With new innovations in printing, there are many out of the ordinary, in fact, very unusual stamps which have been printed by various countries in recent times. This thread will show stamps printed on many different types of material other than paper, and others which are really unusual, such as those with different “stuff” affixed or attached to them.

The thread will now show the thousands of stamps and Souvenir Sheets in various shapes which have issued in recent years as there is already another thread showing these, and with so many now issued, they cannot really be classified as “unusual” any more.

First shown are examples of stamps with different types of “stuff” attached/affixed to them.

<https://www.stampboards.com/viewtopic.php?f=13&t=28184#p2082072>

This 2003 S/S from Russia has real clay affixed to the tennis court (as does a larger souvenir sheet showing the same design).



This 2003 set from Thailand has clay affixed to the pottery (as does the perf and imperf souvenir sheets containing the same stamps).

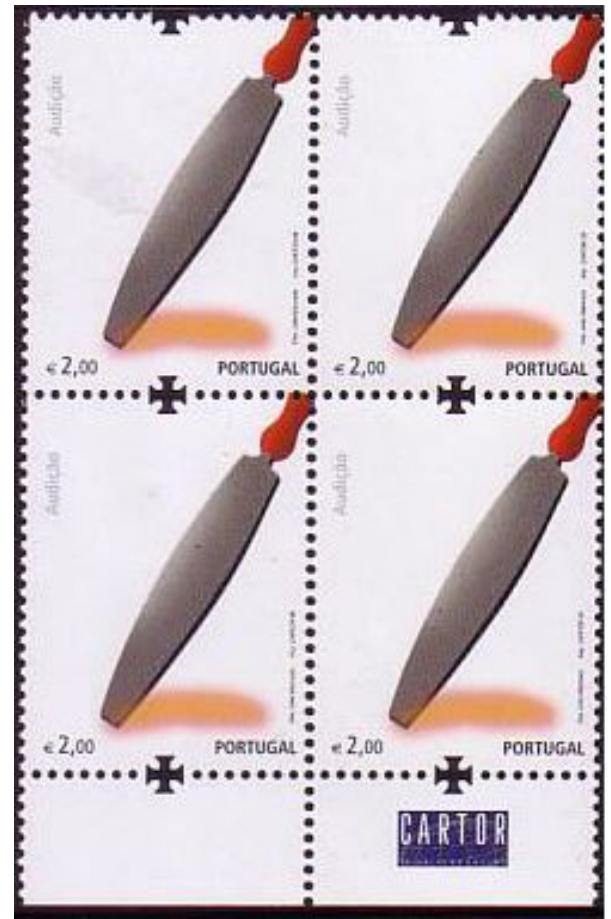




## STUFF ON STAMPS - CONTINUED



This 2005 strip (taken from S/S) from United Arab Emirates has a little pearl affixed to each stamp.



This 2009 Portugal stamp has stone (or something similar) affixed to the file, so when rubbed, it makes a scraping sound.



This 2005 strip from Brazil has gravel affixed to the road.

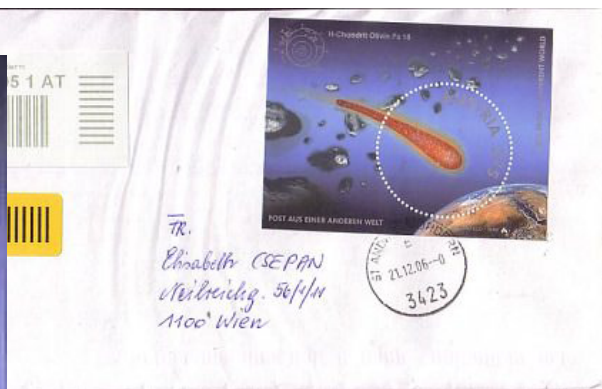
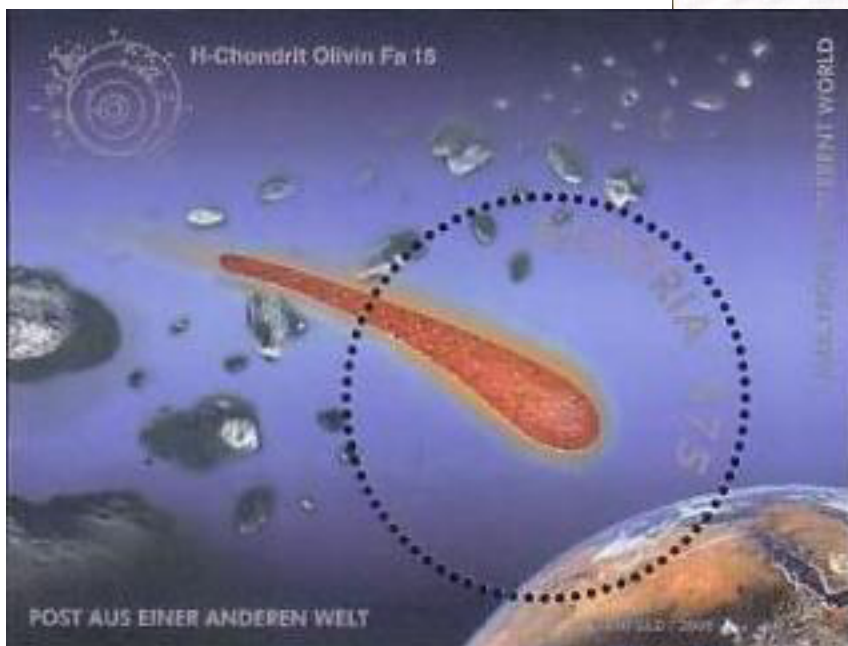


[See More Stuff on Stamps](https://www.stampboards.com/viewtopic.php?f=13&t=28184#p2082072)

<https://www.stampboards.com/viewtopic.php?f=13&t=28184#p2082072>

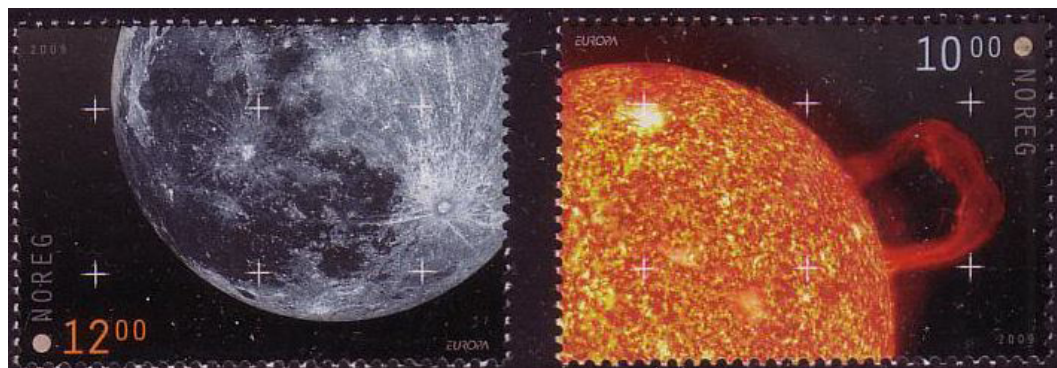


## STUFF ON STAMPS - CONTINUED



This 2006 S/S from Austria has meteorite dust affixed to it.

This 2009 set from Norway has meteorite dust inside the small capsule affixed to each stamp (as does the souvenir sheet containing both stamps).



This 2010 set from Iceland has volcanic ash affixed to each stamp.



[See More Stuff on Stamps](https://www.stampboards.com/viewtopic.php?f=13&t=28184#p2082072)

<https://www.stampboards.com/viewtopic.php?f=13&t=28184#p2082072>



## STUFF ON STAMPS - CONTINUED



These 3 x S/S (one issued by Austria, one issued by Hong Kong and then one issued jointly) have small crystals embedded in the fireworks.



This 2004 S/S from Austria has Swarovski crystals affixed to each stamp.



[See More Stuff on Stamps](https://www.stampboards.com/viewtopic.php?f=13&t=28184#p2082072)

<https://www.stampboards.com/viewtopic.php?f=13&t=28184#p2082072>



# JOHN LENNON

## John Lennon Receives Commemorative U.S. Postage Stamp

Iconic Bob Gruen-shot 1974 photograph adorns “Forever” stamp dedicated to Beatles legend and noted philatelist

A U.S. postage stamp commemorating John Lennon’s legacy was unveiled at a Friday ceremony at New York’s Central Park, with the late Beatles legend’s widow Yoko Ono and son Sean Lennon in attendance.

“I know that my father would have been really thrilled to be accepted, officially in this way, on a stamp,” Sean Lennon said at the event. “About as official as it gets, I think.”

John Lennon was a noted philatelist: In 2016, Lennon’s personal collection of stamps, which he started as a child, displayed at the World Stamp Show in New York City following a residency at the Smithsonian National Postal Museum.

Lennon’s own U.S. postage stamp uses the same Bob Gruen-shot photographed from the Walls and Bridges photo session in 1974; Gruen also spoke at the stamp’s unveiling Friday, the Associated Press reports. The “Forever” stamp is also designed to look like a 45” vinyl single as a record peeking out of a sleeve is featured at the top of the 16-stamp sheet.

The John Lennon stamp is available to order now through USPS.

“Everybody loves to listen to John’s songs and I’m very proud of it, but also the fact that this day, Imagine and you guys are here. It’s incredible,” Ono said at the USPS ceremony.

Imagine: the Ultimate Collection, an upcoming box-set anthology of the celebrated 1971 LP Imagine, is due out October 5th.

<https://www.rollingstone.com/music/music-news/john-lennon-postage-stamp-720890/>





# BEFORE HE WAS A MUSICIAN, JOHN LENNON WAS A PHILATELIST

Marking the arrival of a new postage stamp, the musician's boyhood collection is on view at the National Postal Museum

By Owen Edwards

smithsonian.com

September 25, 2018

Dedicated stamp collectors usually have implausible dreams. For example, to find, among a grandparent's love letters, an envelope with an airplane printed upside down. Or, in a flea market in Athens a stamp that no fellow philatelists have ever seen before. But there is a dream so crazy that no collector ever imagines it: To be able to add to an album a stamp with your own face on it.

This impossible dream has now come true for a man who started collecting stamps at the age of ten, in Liverpool, England. His name is John Lennon, one of the fab four Beatles, and his stamp has just been issued by the U.S. Postal Service as part of the Music Icons series. Prompted by the new stamp, the Smithsonian's National Postal Museum has put Lennon's own collection back on view for the first time since 2006 (though it has been displayed elsewhere in the intervening years).

Lennon's stamp collecting was inspired by his late cousin Stanley Parkes, who gave him the classic Mercury album (with a picture of the god Mercury on the cover) when John was 10 years old. The album's new owner wrote his name on the title page, after erasing Stanley's, and beneath it his address at the time: 451 Menlove Ave., Woolton, Liverpool. (The house of his aunt Mimi, later bought by Yoko Ono and given to the National Trust.) As a boy, Lennon prefigured his future of counter culture cheekiness by sketching moustaches and beards on the book's images of Queen Victoria and King George VI.

The album found its way to the Smithsonian when the curator of the Postal Museum, W. Wilson Hulme, who died in 2007, read an article about it having been bought at auction in London by a rare book dealer. I first wrote about the album when it was displayed in 2005, speculating that most young boys just want to be cool, and stamp collecting

might seem embarrassingly uncool. But Hulme told me at the time, "There was nobody cooler than John Lennon." Amen!

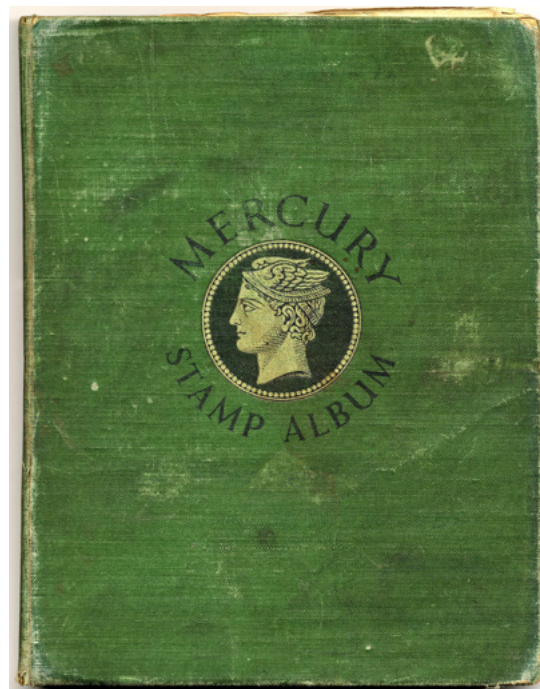
I was, and remain, a zealous Beatles fan, and writing about Lennon the stamp collector let me rethink his artistry. As a writer and lyricist, Lennon was, in a sense, an inheritor of the whimsical genius of Lewis Carroll, the scribe who penned: "Twas brillig, and the slithy toves. Did gyre and gimble in the wabe: all mimsy were the borogoves...."

I would hold, as equal to that madcap verse, Lennon's words for "I Am the Walrus."

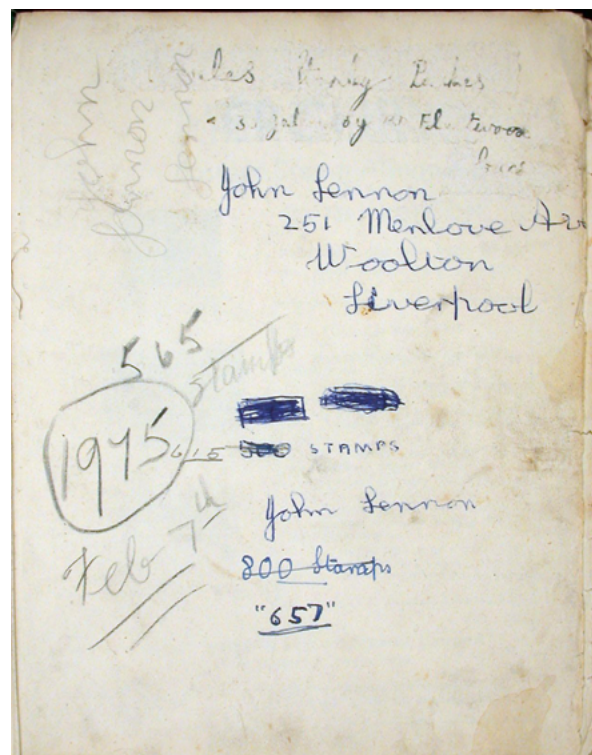
Sitting on a corn flake  
Waiting for the van to come  
Corporation T-shirt, stupid bloody  
Tuesday  
Man you've been a naughty boy  
You let your face grow long  
I am the egg man  
They are the egg men  
I am the walrus  
Goo goo g'joob  
"The path and provenance of the album are somewhat murky," Hulme, told me. "We tried to trace the path it had taken, but as is often the case the auction house wouldn't give us much information."

The collection had been sold once before at Christie's, and for a while before that had been owned by a private dealer. But how it found its way to the market in the first place remains a mystery. The museum did make contact with Stanley Parkes, the original owner, to verify that the book was, indeed, the one he gave as a gift to his cousin. The museum has recently published the letter it received June 22, 2005, from Parkes, who died in 2016.

Quite extraordinary that you should contact me about John's Stamp Album.



Lennon's stamp collecting was inspired by his late cousin Stanley Parkes, who gave him the classic Mercury album (with a picture of the god Mercury on the cover) when John was 10 years old. (National Postal Museum)



The album's new owner wrote his name on the title page, after erasing Stanley's, and beneath it his address at the time: 451 Menlove Ave., Woolton, Liverpool. (National Postal Museum)



## BEFORE HE WAS A MUSICIAN, JOHN LENNON WAS A PHILATELIST - CONTINUED

John and I grew up together and were very, very close to one another in fact he was just like a little Brother to me. In fact, I passed on to him such things as my 300 Dinky Toy Cars, and my Mecanno Sets which were made by the very Famous Liverpool Toy Manufacturing Company and Mecanno Set Makers. Their Products are all on show at a Liverpool Museum on the Albert Docks, where the Beatles City Cavern have their Tourist Attraction about the Beatles, Etc. When I read recently that his Stamp Album had gone for some amazing price to some collector, I thought to myself "I bet that is my Stamp Album that I gave to John," for at the time it was not reported that my name was on the front cover of it.

I got him interested in Stamp collecting and he would carry on collecting stamps himself after I gave him my Stamp Album. Especially as Aunt Mimi corresponded with our large amount of relatives in New Zealand. Stamp collecting was very good for improving one's Geography Lessons at School.

He did inherit the Stamp Album from

me and I encouraged him to keep an interest in it. How did it come to end up in an American Museum, was it a Private Collector?

The 150 pages of the Mercury album now contains 565 stamps, though Lennon's front-page notations, written over his erased cousin's name, show the number 657 in quotes, and the number 800 crossed out. More mysteries. Was 800 Lennon's hoped-for goal? Were some of the stamps in the album, perhaps those collected by Parkes, traded away or discarded as not up to young John's standards.

Hume pointed out to me that young collectors are often more attracted to color than rarity, and many of the stamps on pages headed "New Zealand" and "United States" are pleasingly colorful. He also said that youngsters frequently lose interest in stamp collecting when their interest in the opposite sex replaces it. Or, in Lennon's case, when they become world famous rock 'n' roll musicians.

At some point, the young Lennon pasted his last stamp into his green book, put

down the album and picked up a guitar. The rest is musical history, but at the Postal Museum, philately history lives on.

Alas, the owner of the album did not live on to see his own famous face on a U.S. stamp. As I recounted sadly in that first piece:

"My connection to this off-beat poet was severed unexpectedly in 1980 when, sitting in my Manhattan apartment just across from the Dakota, with the windows open on an unusually warm December night, I heard the shots that killed him."

"John Lennon: The Green Album" is on view at the National Postal Museum in Washington, D.C. through February 3, 2019.

Read more:

<https://www.smithsonianmag.com/smithsonian-institution/he-was-musician-john-lennon-was-philatelist-180970391/>

<https://postalmuseum.si.edu/lennon/stamp-album1.html>



*Lennon's Aunt Mimi corresponded with relatives in New Zealand and so he had collected the stamps from the letters. (National Postal Museum)*



# HOT WHEELS

Hot Wheels

—September 29 | Fort Worth, TX | PSA pane of 20

Since the inception of Hot Wheels, Mattel has produced thousands of varieties of cars. The issue celebrating Hot Wheels' 50th anniversary, will feature 10 of the most outrageous to their car designs.

Arranged in diagonal rows, the pane shows the Hot Wheels cars speeding along a bright orange track. Each stamp has the name of these vehicles in one of the top corners:

[https://store.usps.com/store/product/buy-stamps/hot-wheels-S\\_569004](https://store.usps.com/store/product/buy-stamps/hot-wheels-S_569004)



first-day-of-issue dedication ceremony at the Goodguys 26th Summit Racing Lone Star Nationals in Fort Worth, TX.

10 a.m. CDT, Saturday, Sept. 29  
Texas Motor Speedway  
3545 Lone Star Circle  
Fort Worth, TX 76177

Top row (left to right):

- **The aptly named Purple Passion** (1990), a super sleek metallic purple and green model.
- **The Rocket-Bye-Baby** (1971) is equipped with a roof-mounted rocket,
- The spooky Rigor Motor (1994) is a coffin-shaped hot rod whose engine is adorned with two skulls.
- **The Rodger Dodger** (1974) has a giant engine bursting out of its hood.
- **The Mach Speeder** (2018) is a true 21st-century racer with a twin turbo V6 hybrid engine and wide front air intakes built to look like a predatory fish.

Bottom row (left to right):

- **The Twin Mill** (1969), one of the most iconic Hot Wheels of all-time, features dual big-block engines.
- **The Bone Shaker** (2006) is a hot rod with a fierce-looking skull for a grille.
- **The HW40** (2008), introduced to celebrate the 40th anniversary of Hot Wheels, features a jet turbine engine and a futuristic glass hood.
- **The original surfboard-toting Deora** (1968) was included in the first Hot Wheels line. The souped up Deora II on the stamp came out in 2000.
- **The Sharkruiser** (1987) features fins, a tail, a sharp-toothed grille, and a roaring V8 engine.





The Hot Wheels stamp pack contains 20 Map of Australia stamps, the stamp pack also includes bright and colourful Hot Wheels slogans and illustrations in the stamp tabs all presented in a high quality folder.

## Collecting, trading and racing Hot Wheels

Hot Wheels licensed products

Since its release 50 years ago, Hot Wheels has become a worldwide sensation, delighting generations of children and adults alike. Four billion die-cast vehicles that have been made since the first Hot Wheels zoomed off the production line in 1968.

On 14 August 2018, we release a Hot Wheels licensed stamp pack and postal numismatic cover that are sure to rev your interest! Containing 20 Map of Australia

[https://shop.auspost.com.au/product/hot-wheels-stamp-pack-15141092;pgid=Ziz0kD-jNcFSRpwIFTjouE0r0000lcrrB8\\_P;sid=7Y5M-WqgLfWjBcWvOyEsJNuV\\_ZX\\_iQGd\\_aD0Od\\_EFy](https://shop.auspost.com.au/product/hot-wheels-stamp-pack-15141092;pgid=Ziz0kD-jNcFSRpwIFTjouE0r0000lcrrB8_P;sid=7Y5M-WqgLfWjBcWvOyEsJNuV_ZX_iQGd_aD0Od_EFy)





## STATUE OF LIBERTY GOOF COSTS THE USPS \$3.5M

### It used an image of a Las Vegas Statue version in its 2011 stamp

(NEWSEY) – The United States Postal Service’s money woes just got \$3.5 million worse, and the Statue of Liberty is to blame. A judge ruled last week that the agency did commit copyright infringement when it used an image of Robert S. Davidson’s Statue of Liberty on a stamp it issued in 2011. The Lady Liberty that towers over New York Harbor was designed by French sculptor Frédéric Auguste Bartholdi; Davidson’s replica stands before the New York-New York Hotel & Casino in Las Vegas, reports Fast Company. The Washington Post (which has an image of the stamp) in December 2013 reported that the USPS had obtained the image from Getty Images but didn’t also seek permission from Davidson, likely because the USPS assumed what it was using was in the public domain. Not so.

A stamp collector had identified the mix-up in 2011, and the USPS was made aware—but then it printed another 1.13 billion of the stamps on top of the 3.5 billion it had already made, reported Artsy in 2017. As such, the suit claimed the infringement was knowingly committed. Identical copies of works in the public domain (which the statue is) aren’t covered by copyright infringement protections. But Davidson argued in his suit that he wasn’t trying to create a replica but rather to craft a fresher, more feminine version. Per the ruling, “he envisioned his mother-in-law as inspiration ... and viewed her picture every night during the construction of the face of the statue.” The judge ruled the “plaintiff succeeded in making the statue his own creation, particularly the face.” The amount owed: \$3,554,946.95 in royalties, plus interest. (The USPS has announced a new kind of stamp.)



By Kate Seamons, Newser Staff  
Posted Jul 3, 2018 10:05 AM CDT  
Updated Jul 8, 2018 6:37 AM CD

<http://www.newser.com/story/261425/stamp-featured-wrong-statue-of-liberty-and-usps-owes-35m.html>

## MAYA ANGELOU MISQUOTE

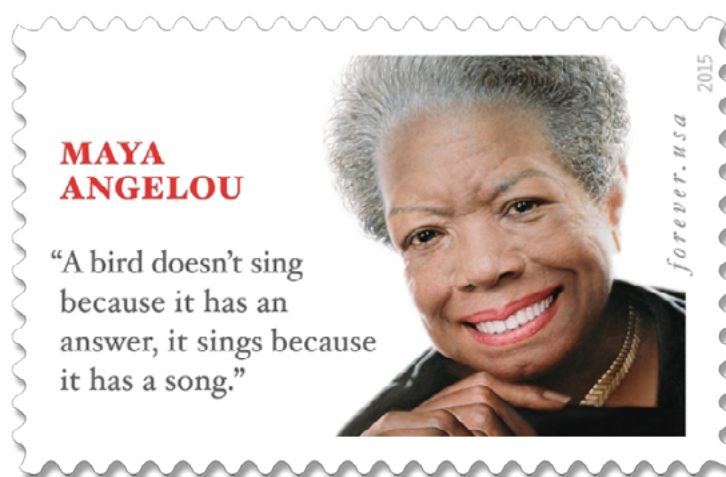
### Maya Angelou’s Stamp Has a Glaring Problem. That quote? Not really hers.

Maya Angelou is a poet, author, civil rights icon, cultural giant, and as of today the face of the United States Postal Service’s latest Forever stamp. What she is not, however, is author of the quote attributed to her that graces the aforementioned stamp, reports the Washington Post. “A bird doesn’t sing because it has an answer, it sings because it has a song,” reads the quote oft attributed to Angelou. But another author, Joan Walsh Anglund, says the quote is hers. “A bird doesn’t sing because it has an answer, it sings because he has a song,” reads a passage from page 15 of Anglund’s 1967 book, *A Cup of Sun*. “Yes, that’s my quote,” she told the Post last night.

A Postal Service rep initially stood by the quote (which was approved by Angelou’s family, notes the Post), citing—what else?—the Internet. When told Anglund had verified it as her own, he added that, “Had we known about this issue beforehand, we would have used one of

[Angelou’s] many other works.” A very disappointed Emerson College lit professor tells the Post it’s particularly discouraging because Angelou is so “eminently quotable. You can flip open one of her books at random and pull out something.” For her part, Anglund is being pretty magnanimous. “I love her things, of course,” she says of Angelou. “But I think it easily happens sometimes that people hear something, and it’s kind of going into your subconscious and you don’t realize it.” (Angelou had pretty blunt thoughts about the quotes put on MLK’s monument.)

By Polly Davis Doig, Newser Staff  
Posted Apr 7, 2015 11:30 AM CDT



The limited edition “Forever” stamp honoring the late poet, author, and civil rights champion Maya Angelou. (AP Photo/USPS)

<http://www.newser.com/story/205095/maya-angelous-stamp-has-a-glaring-problem.html>





## To The Membership,

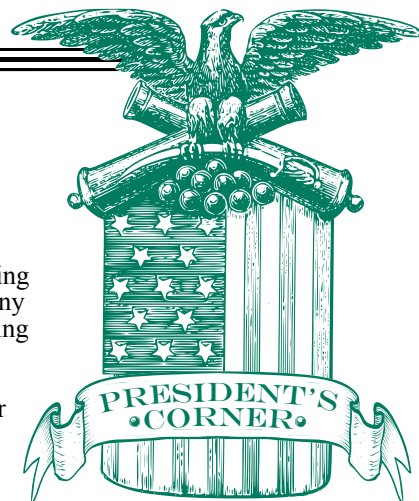
We've concluded another quarter but I trust your collection is not likewise concluded and continues to grow.

As you know, David Kyzer left his collection to our club in his will and we have been distributing it to the members in small lots to search through and keep anything they wish. As a reminder, any items that you do not want to keep return them so that someone else can have a chance. Anything that is left over at the end we will donate to a worthy recipient.

As was announced, your board has approved a proposal to waive membership dues for 2019 for any member in good standing as of the date of our holiday dinner this year (December 12th). To avoid any questions please confirm with Joe Baker that your dues were paid for 2018. This is intended to be a one-time "dividend" to reflect the healthy state of our treasury.

Until next time, happy collecting.

Geoff Owens  
*President*



## MEMBERSHIP

Membership is open to anyone of good character who is interested in stamps and learning more about them. Annual dues for membership are \$12.00

## CLUB MEETINGS SCHEDULE.

Meetings are held second and fourth Wednesday of each month. 7:30 pm  
Edgemere Retirement Center  
8523 Thackery Dallas, TX

### October 10

Board Meeting at The Edgemere on  
Northwest Highway and Thackery  
Program: "Jack's Album's and Rick  
Houghland Estate Auction"

### October 24

Program: "Glaciers of Controversy: The  
'American Issue' of Greenland", speaker  
Geoff Owens  
Begin Holiday Dinner Reservations –  
Reservation Form Handout

### November 9-10

Mid-Cities Stamp Expo at Grapevine  
Convention Center, 1209 S. Main Street,  
Grapevine  
Friday 10-5, Saturday 9-4

### November 14

Board Meeting at The Edgemere on

Northwest Highway and Thackery  
(nominate slate of officers for 2017)  
Program: "Quarterly Auction", speaker:  
Entire Membership

### November 28

Informal Program: "Jack's Album's"

### December 7-8

TSDA Richardson Stamp Show at  
Richardson Civic Center, W. Arapaho and  
Central (75)  
Friday 10-5, Saturday 9-4

### December 12

Program: Holiday dinner at The  
Edgemere on Northwest Highway and  
Thackery

## UPCOMING SHOWS

### October 13-14

SAN ANTONIO TSDA  
Norris Conference Center,  
618 Northwest Freeway Loop  
410, Suite 207 (across San Pedro from  
NorthStar Mall), San Antonio, TX 78216  
(Saturday 10-5, Sunday 10-3)

### November 2-3

HOUSTON TSDA, Crowne Plaza  
Hotel, 7611 Katy Freeway (IH-10 West),  
Houston, TX 77024.  
(Friday 10-5, Saturday 9-4)

### November 9-10

MID-CITIES STAMP CLUB EXPO,  
Grapevine Convention Center  
1209 Main St., Grapevine, TX 76051.  
Highway 114 at Main Street exit, just  
north of DFW Airport.  
(Friday 10-5, Saturday 9-4)

### December 7-8

DALLAS TSDA,  
Richardson Civic Center  
411 W. Arapaho Rd, Richardson, TX  
75080 (Friday 10-5, Saturday 9-4)

## SPECIAL THANKS TO

### President:

Geoff Owens

### Vice President:

Stan Bartnikowski

### Secretary:

Joe Baker

### Treasurer:

Rod Gabel

### Directors:

Bill Laupus  
Ivan Zuniuga  
Chris Titus



Find Us Online at

[STAMPS.ORG/DALLAS](http://STAMPS.ORG/DALLAS)



Instagram [DALLAS\\_STAMP](https://www.instagram.com/DALLAS_STAMP)



@DALLASSTAMP