

STAMP & TONGS



(JANUARY 1, 2019 | VOLUME 65)

We welcome members with all levels of experience, from beginners to advanced membership is open to all persons of good character who are interested in philately.

IN THIS ISSUE:



UNITED STATES 2019 STAMP PROGRAM INCLUDES STAMPS FOR WOODSTOCK AND USS MISSOURI

The United States Postal Service will commemorate the 50th anniversary of the Woodstock music festival and the 75th anniversary of the commissioning of the USS Missouri on stamps to be issued in 2019.

The Postal Service announced the subjects for its 2019 stamps on Nov. 20.

Mary-Anne Penner, the U.S. Postal Service Stamp Services executive director, said: "The miniature works of art illustrated in the 2019 stamp program offer something for everyone's interest about American history and culture. From legendary poet Walt Whitman to the entertainment genius of Gregory Hines to the majestic beauty of our Wild and Scenic Rivers, this program is diverse and wide ranging and tells America's story on stamps."

The U.S. Postal Service's press release listed the following 19 subjects for stamps to be issued in 2019. One postal stationery item also was announced. Unless otherwise stated, the stamps are forever stamps.

Hearts Blossom. A new stamp in the Love series features USPS art director Antonio Alcalá's design with the word "Love" in cursive script and 12 colorful hearts.

The Postal Service reports that the design expresses "love's joyful, bountiful nature," and that the color palette (red, purple, orange and pink) "is intended to create a happy and positive feeling."



Year of the Boar. The 12th and final stamp in the Celebrating Lunar New Year series that began in 2008 depicts pink peach blossoms on a branch based on a painting by Kam Mak. The Year of the Boar starts on Feb. 5, 2019, and ends Jan. 24, 2020.



UNITED STATES 2019 STAMP PROGRAM INCLUDES STAMPS FOR WOODSTOCK AND USS MISSOURI

Gregory Hines. The 42nd stamp in the Black Heritage series honors dancer, actor, singer, dancer Gregory Hines (1946–2003). The Postal Service said: “Hines developed the entertainment traditions of tap into an art form for a younger generation and is credited with renewing interest in tap during the 1990s.”

Designed by art director Derry Noyes, the stamp shows a 1988 photograph of Hines by Jack Mitchell.

Cactus Flowers. A booklet of 20 stamps (10 designs) will show John P. Schaefer’s photographs of the following cacti: *Opuntia engelmannii*, *Rebutia*



minuscula, *Echinocereus dasyacanthus*, *Echinocereus poselgeri*, *Echinocereus coccineus*, *Pelecyphora aselliformis*, *Parodia microsperma*, *Echinocactus horizontalis*, *Thelocactus heterochromus* and *Parodia scopa*. Each stamp design is included twice in this booklet, designed by art director Ethel Kessler.

Alabama Statehood. The 22nd state, Alabama, was admitted into the union on Dec. 14, 1819. The new stamp commemorating this bicentennial shows a photograph by Alabama photographer Joe Miller of sunset in Cheaha State Park, including a view of Talladega National



Forest, which surrounds the park. Greg Breeding designed the stamp using Miller’s photograph. The art director is William J. Gicker.

Marvin Gaye. The Music Icon series continues with a stamp honoring Marvin Gaye (1939–1984). Known as both the “Prince of Soul” and the “Prince of Motown,” Gaye was posthumously inducted into the Rock and Roll Hall of Fame in 1987.



According to the Postal Service, the stamp design features a portrait of Gaye inspired by historic photographs. As with other stamps in this series,

the stamp pane is designed to resemble a vintage 45rpm record sleeve. Art director Noyes designed the stamp pane with original art by Kadir Nelson.

USS Missouri. America’s last battleship, the USS Missouri 7 (BB-63) was commissioned June 11, 1944. The stamp commemorating the 75th anniversary depicts the ship in its “disruptive camouflage” period of 1941–45.

The Postal Service describes

the artwork as a “digital illustration by Dan Cosgrove.” Art director Greg Breeding designed the stamp.

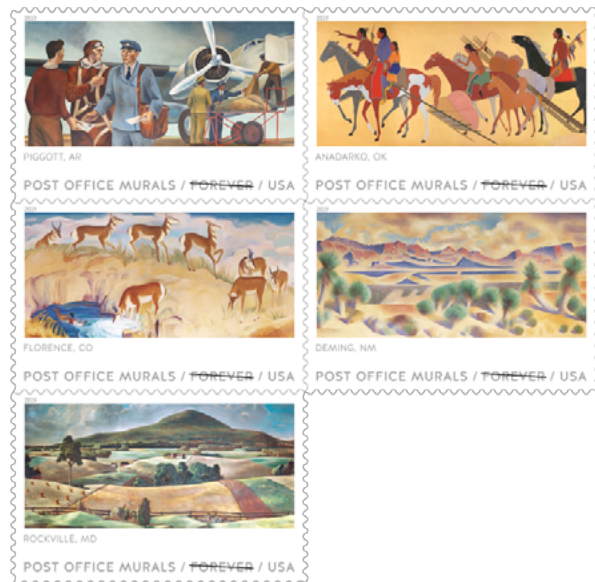
On Sept. 2, 1945, Japan formally surrendered aboard USS Missouri, ending

World War II. In addition to WWII, the ship saw combat in the Korean War and Operation Desert Storm.

Post Office Murals. A pane of 10 stamps shows five different murals (two of each design) created during the era of the Great Depression “designed to add a touch of beauty to Post Office walls and help boost the morale of Americans,” according to the Postal Service.



The Postal Service also reports that the town or city and state in which the work of art is located is printed underneath each mural on the designs. The murals pictured are Kiowas Moving Camp (1936) Anadarko, Okla.; Mountains and Yucca (1937) Deming, N.M.; Antelope (1939) Florence, Colo.; Sugarloaf Mountain (1940) Rockville, Md.; and Air Mail (1941) Piggott, Ark. Art director Alcala designed the stamps.



UNITED STATES 2019 STAMP PROGRAM CONTINUED

The U.S. Flag. Alcalá also took the photograph that will appear on a new definitive stamp celebrating the American



flag. According to the Postal Service, the photo shows “one of several [flags] on the flagpoles near the end of Chicago’s Navy Pier, waving in a May breeze.”

Wild and Scenic Rivers. A pane of 12 stamps showcases the nation’s rivers or river segments that have been designated within the Wild and Scenic Rivers System: the Merced, Owyhee, Koyukuk, Niobrara, Snake, Flathead, Missouri, Skagit, Deschutes, Tlikakila, Ontonagon and Clarion rivers.

Noyes designed the pane, using photographs of the rivers by Michael Melford, Tim Palmer, and Bob Wick (Bureau of Land Management photographer).



Walt Whitman. The 32nd stamp in the Literary Arts series commemorates the 200th birth anniversary of poet Walt Whitman (1819–1892). The stamp is for the 3-ounce rate and will include the words “Three Ounce” on the right side of the design.

The portrait of Whitman shown on the stamp is based on a photograph taken by Frank Pearsall in 1869. The Postal Service describes the hermit thrush on a lilac bush background as recalling “When Lilacs Last in the Dooryard Bloom’d, an elegy for President Abraham Lincoln written by Whitman soon after Lincoln’s assassination on April 14, 1865.”

The artwork on the stamp is by Sam Weber, and art director Breeding designed the stamp.

Frogs. Four stamps in a booklet of 20 feature the Pacific tree frog, the northern leopard frog, the American green tree frog and the squirrel tree frog. The digital illustrations of these North American frogs by artist Nancy Stahl are in shades of green and brown. Art director Gicker designed the stamps.



State and County Fairs. Four se-tenant (side-by-side) stamps depict a panorama of activities typical of state and country fairs. Mike Ryan designed the stamps, which feature original art by Mick Wiggins; Breeding was the art director.

According to the Postal Service, the stamps (starting on the left) show farmers unloading produce behind a white fence, a child sitting on the fence and holding a chicken, a Ferris wheel, a merry-go-round, fairgoers admiring the livestock, other visitors holding balloons as they head toward a sweets stand, and children buying treats from the stand.



Woodstock. The most famous rock festival of the 1960s, the Woodstock Music and Art Fair was held Aug. 15-18, 1969, in the small farming community of Bethel, N.Y. To celebrate the 50th anniversary, art director Alcalá designed a stamp featuring the dove and the words “3 Days of Peace and Music” from Arnold Skolnick’s 1969 promotional poster.

UNITED STATES 2019 STAMP PROGRAM CONTINUED

Winter Berries. Artist Steve Buchanan worked with art director Alcalá to create four stamps illustrating the winterberry (*Ilex verticillata*), juniper berry (*Juniperus communis*), beautyberry (*Callicarpa americana*) and soapberry (*Sapindus saponaria*). The stamps will be produced in booklets of 20.



Joshua Tree. The \$7.35 Priority Mail stamp in the American Landmarks series captures “the desolate beauty of the Joshua tree (*Yucca brevifolia*) and its distinct desert environment,” according to the Postal Service. As with previous stamps in this series, the artwork is by Cosgrove. Art director Breeding designed the stamp.



Bethesda Fountain. The \$25.50 Priority Mail Express stamp in the American Landmarks series depicts Cosgrove’s



autumn scene of the Bethesda Fountain in New York City’s Central Park. The fountain, also called Angel of the Waters, was designed by Emma Stebbins in 1868 and dedicated in 1873, according to www.centralpark.com. Art director Breeding also designed this stamp.

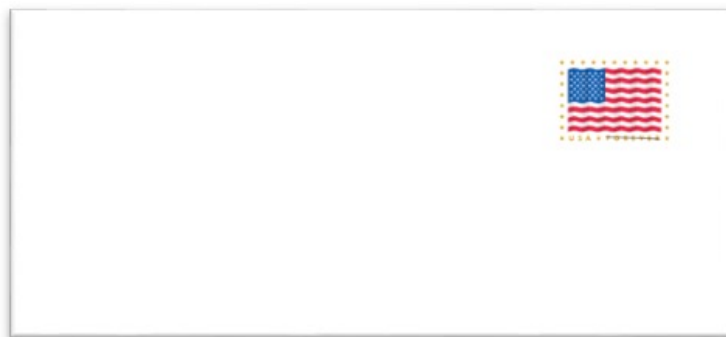
stamped envelope features artwork by Kit Hinrichs evoking “a rich sense of history even as it presents a recognizable icon in a fresh, contemporary way,” according to the Postal Service. Kessler served as art director.

Additional stamps to come. Although it wasn’t included as part of the Nov. 20 announcement, the Postal Service also has reported that it will issue a Post-Traumatic Stress Disorder (PTSD) semipostal stamp in 2019.



Coral Reefs. Four postcard-rate stamps display the beauty and coral reefs. The stylized artwork by Tyler Land depicts a different type of stony coral and associated reef fish on each stamp: elkhorn coral and French angelfish, brain coral and a spotted moray eel, staghorn coral and blue-striped grunts, and pillar coral with a coney grouper and neon gobies. Art director Kessler designed the stamps.

The Postal Service described its announcement as revealing several of the new stamps scheduled to be issued next year. More stamps likely will be added.



California Dogface.

A Butterfly stamp originally announced as part of the 2017 stamp program but never issued is included now with the 2019 program. The stylized design of the seventh stamp in this series depicts the California dogface (*Zerene eurydice*), named for markings on the male butterfly that resemble a poodle head in profile.



Linns Stamp News

By Denise McCarty

<https://www.linns.com/news/us-stamps-postal-history/new-2019-united-states-stamps-revealed.html>

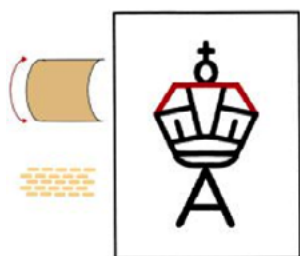
https://about.usps.com/newsroom/national-releases/2018/pr18_095.htm

The stamp pays the nonmachinable surcharge, and it is for use on irregularly sized envelopes, such as square greeting cards, invitations or announcements. Tom Engeman, who has illustrated all of the stamps in the series, created the artwork. Noyes is the designer.

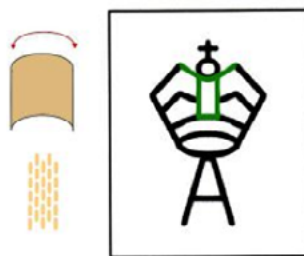
U.S. Flag stamp envelope. A new

IDENTIFYING AUSTRALIAN WATERMARKS

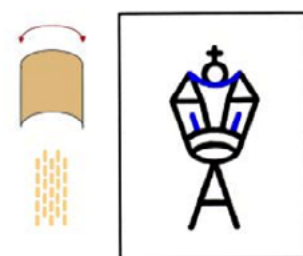
For those of us without extensive experience in handling Australian stamps, especially “Roos” with the first three watermarks, identifying the watermarks can be a bit tricky. And the illustrations used in catalogues are not necessarily as helpful as could be wished for. To help make life easier Greg Allan, of Goulburn, New South Wales, has created a guide which points out exactly what to look for. As a second, confirming step, he also describes the mesh of the paper, which will curl top to bottom or side to side when held face down in the palm of one’s hand. The other watermarks are less troublesome but are included for completeness.



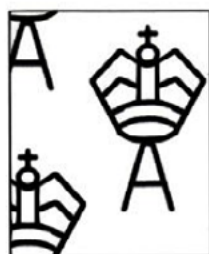
TYPE 1 - SG2 - S8
(First Watermark)
Mesh of paper horizontal



TYPE 2 - SG5 - S9
(Second Watermark)
Mesh of paper vertical



TYPE 3 - SG6 - S10
(Third Watermark)
Mesh of paper vertical



TYPE 4 - SG6a - S11
(Large Multiple Watermark)



TYPE 5 - SG7 - S203
(Small Multiple Watermark)



TYPE 6 - SG15 - S228
(C of A Watermark)

Drawn by Greg Allan. Used with his kind permission.

THE LOWLY CINDERELLA: IGNORED BUT INFORMATIVE

Poor Cinderellas, so belittled by their snooty step-sisters (aka, “real stamps”). But given a chance some will sparkle and enlighten. Take for example the following:

This label was issued by the Romanian Navy League, as you can see in 1930. Who even knew Romania had a navy? But according to Wikipedia Romania established a flotilla on the Danube River in 1860. By 1941 it had expanded into the Black Sea and consisted of four destroyers, one submarine, five minelayers, three torpedo boats, three gunboats, and several smaller vessels and seaplanes. During World War II this naval force managed to sink one Soviet destroyer and 16 Soviet submarines. None of this would I have known had

I not come across this Cinderella label and become intrigued into doing a bit of research. Maybe the ignored step-children of philately deserve at least a little attention!

--Geoff Owens



DEAD COUNTRY STAMPS

One of the attractions of stamps is the nuggets of history they leave behind of events and people, often long forgotten, but for the stamps they left behind. Great Britain invented stamps in 1840 and prepaid postage became an instant hit in uniting all the corners of the world. Britain, being the major colonial power in that era, began issuing stamps for every piece of land they gained control of. They found that postal systems and stamps were a key to sustaining that control. This was quickly emulated by the then other colonial powers; namely Spain, Portugal, France, Netherlands, Russia, Turkey, and Germany to name the most prominent. Aside from this, wars and national boundary disputes were frequent, so, not just governments but entire countries came and went. Africa became the focus of much of the colonization effort. There, pieces of geography were carved out, fought over and shuffled about. We are left today with as many former stamp issuing nations and other entities as there are new ones and current survivors.

Many of philately's great rarities are from dead countries, but it takes more than this to establish which can attract sufficient interest to sustain ever increasing stamp values. Since these issuers often no longer exist, it requires provenance to attract not just collectors, but also investors. I will take you through this vast array of dead countries in several columns over the coming year since the choices are so many

and their rating as investments is not readily apparent.

As the first installment of this subject, I address the various countries that fell, came about and arose again as a result of the Russian revolution in the post-World War I era. Future columns will address the rise and fall of nations from the turmoil of World Wars I and II as well as the colonization of Africa. I will limit my scope to the pre-1950 era which I consider the classic stamps period where investor interest lies.

The table below addresses 17 stamp issuers who came about during the Russian revolution when numerous ethnic sections of Russia saw their opportunity to break away and become independent states. As you can see from the number of years they issued stamps, it did not take too long for the government in Moscow to suppress these efforts and retake most of the territory they considered "Mother Russia." During this time, most of Europe was distracted with the post WWI Versailles Peace Treaty negotiations which were busy redrawing the map of Europe, the Middle East and Africa. That effort also produced a number of Plebiscite states which lived only long enough to hold elections as to whether they wanted to reunite with the country they had been a part of or someone else, but that's a story for another day.

The Russian story is one of suppression

of people who did not want to be a part of the new USSR, but did not prevail. The 7 countries marked with (a) represent nations that lost their fight for independence back then, but regained it after the USSR collapsed and now again issue stamps. As can be seen, they issued few stamps and have not reached sufficient value to attract much investor interest. Armenia, Estonia and Latvia show strength but the rest show little promise. The remaining issuers had less success, often representing breakaway military units who set themselves up as governments. Some of these have appreciated quite rapidly in recent years, perhaps stimulated by Russian collectors who know the relative rarity of these stamps. The guiding principle here is to follow where there is strength. Few of these stamps have reached even the \$1000 catalog price level so they have room to run. Look for collections from these countries rather than buying individual stamps as the best way to begin investing in them. Note that there is a lot of fake material here and bogus overprints, so look for expertising when buying higher priced items. Due to their short lives, used stamps and covers are much rarer than mint stamps. They may represent an investors' best focus.

Aug 28, 2016, 05:42pm

Richard Lehmann- Contributor

[https://www.forbes.com/sites/](https://www.forbes.com/sites/richardlehmann/2016/08/28/dead-country-stamps/#7637db4c7680)

[richardlehmann/2016/08/28/dead-country-stamps/#7637db4c7680](https://www.forbes.com/sites/richardlehmann/2016/08/28/dead-country-stamps/#7637db4c7680)

COUNTRY	YEARS OF ISSUE	SURVEY COUNT ¹	MINT VALUE \$	5 YR MINT APPREC %	10 YR MINT APPREC %	USED VALUE \$	5 YR USED APPREC %	10 YR USED APPREC %
ARMENIA (a)	1919-22	132	\$9,214	139.45	1016.31	\$9,297	164.22	1097.97
AZERBAIJAN(a)	1919-1924	50	\$7,162	5.36	67.13	\$10,157	72.50	470.00
BATUM	1919-20	48	\$27,015	11.62	137.08	\$38,797	51.65	133.89
CENTRAL LITHUANIA	1920-22	21	\$5,145	52.78	97.89	\$3,920	61.43	106.71
ESTONIA(a)	1918-1940	54	\$30,805	76.14	104.80	\$32,314	138.68	183.12
FAR EAST REPUBLIC	1920-21	35	\$2,675	20.16	23.74	\$1,150	-14.90	12.20
GEORGIA(a)	1919-23	10	\$598	5.00	43.00	\$932	-1.00	35.00
KARELIA	1922	15	\$287	42.56	111.22	\$1,925	18.27	36.80
LATVIA(a)	1918-40	84	\$685	37.38	34.00	\$960	29.31	34.00
LITHUANIA(a)	1918-39	100	\$7,024	4.97	30.96	\$4,442	23.59	83.80
N. INGERMANLAND	1920	12	\$1,980	25.00	22.33	\$512	0.00	21.50
SIBERIA	1919-22	79	\$13,460	1.77	41.70	\$1,765	0.00	41.12
SOUTH RUSSIA	1918-9	61	\$3,450	-0.51	105.49	\$1,755	3.70	34.44
TRANSCAUCASIAN FED REP	1923	9	\$895	19.57	81.43	\$610	14.67	26.00
UKRAINE(a)	1918-22	5	\$400	11.00	66.75	\$480	9.00	50.00
UPPER SILESIA	1920-22	24	\$6,991	125.42	158.08	\$10,087	58.52	69.29
WESTERN UKRAINE	1918-19	143	\$40,827	8.84	179.47	\$37,147	4.70	183.63

1. Only stamps priced at \$25 or higher are considered.

DPCPS 2018 HOLIDAY DINNER

Members gathered at the Edgemere on December 12th for the annual holiday dinner.

One item of business was conducted, which was the election of officers and directors for 2019. All current officers were reelected. Chris Titus having completed a three year term as a director

rolls off and we extend our thanks. Ben Schkolne was elected to fill the new three year term that expires in 2021. Bill Laupus and Ivan Zuniga continue in their current director terms.

After a delicious meal of beef filet and salmon, "Santa" handed out door prizes which were donated by: Ivan Zuniga, Joe

Baker, Stan Bartnikowski, Jack Urish, and the collection of the late David Kyzer.

Following the dinner attendees were treated to a short recital in the auditorium by the talented Chris Zuniga on the piano. Special thanks to George and Janet Clayton for organizing the event with the Edgemere.



THE UK'S ROYAL MAIL ROYALLY MESSED UP ITS STAMP FOR THE 75TH ANNIVERSARY OF D-DAY

On June 6, 2019, and for much of the rest of the summer, people across Europe will celebrate the 75th anniversary of D-Day. On that date in 1944, tens of thousands of soldiers, many from the US, UK, and Canada, landed on beaches in Normandy to battle Nazi troops in France.

To commemorate this anniversary, Britain's Royal Mail decided to issue a series of stamps featuring photos from the actual landing. But things didn't exactly go as planned. On Dec. 27, Royal Mail posted a preview of one of the 11 stamps on Twitter. Eagle-eyed observers pointed out that the photo was not from D-Day, or of British soldiers, but rather represented US soldiers on a beach in Dutch New Guinea (now part of Indonesia.) The photo was from May 1944, one month before D-Day—and many miles away from France.

As the BBC pointed out, the photo appears in the digital archives of the American National World War II Museum. It is a US Coast Guard photo featured in a July 1944 issue of the US Navy's "All hands" magazine, and labeled as "USS LCI(L)-30 landing troops carrying stretchers onto a beach during a second assault wave."

After the BBC reported on the mistake, Royal Mail announced they would cancel that particular stamp design. A spokesperson for Royal Mail told Quartz there were no plans to pull any of the other designs in that series.

The Royal Mail's flub is the latest in a series of controversial and costly stamp mistakes around the world this year. In June, a judge ruled that the US Postal Service had to pay Robert Davidson, a sculptor who built a Statue of Liberty replica at a Las Vegas casino, \$3.5 million for using his statue on a stamp design in 2010 instead of a photo of the original statue in New York Harbor. According to the New York Times, "The post office had originally picked the photo by searching Getty Images, the stock-photo agency, and believed it showed the real statue."

In September, New Zealand Post released a stamp meant to celebrate the "Predator Free 2050" initiative, which aims by 2050 to eradicate damaging predator species like rats, possums, or stoats. The stamp



was supposed to feature the New Zealand red admiral butterfly—but instead, it portrayed the V. Atalanta butterfly, which is not native to New Zealand. The Moths and Butterflies of New Zealand Trust were reportedly upset.

Also this year, Spain's postal service Correos made a mistake in its "12 Months, 12 Stamps" series, created to honor a different area in Spain each month. In its stamp of the town of León, in northwest Spain, Correos used a cathedral from Burgos, another town, which Spanish magazine Sur claims has a rivalry with León.

<https://qz.com/1510208/>

CLOSED ALBUM IN MEMORIAM OF BOB ROOFNER

We bid farewell to our long time member, Bob Roofner, who has closed his album for the final time. As all know, until recent months Bob had been an active and regular attendee to our meetings for many years. Some will remember his son, Brad, who some years ago often attended meetings with his father. Bob is survived by his loving wife Teresa and sons, Brian and Brad, and their wives. Marshall Robert Roofner, born August 10, 1946, passed away peacefully on December 23, 2018. He grew up in Pittsburgh, Pennsylvania and Birmingham, Michigan. He was a life-long learner,

earning several college degrees: Bachelors and Masters in Business Administration (BBA, MBA) in Finance and Accounting from The University of Michigan, Juris Doctor (JD) from the University of Texas at Austin, and a Master of Laws (LL.M.) in Taxation and International Business from Southern Methodist University, as well as a CPA license. He was an accomplished accounting and tax professional that had a love for numbers and helping people see them clearly. We will miss Bob, and his cheerful demeanor and sense of humor.



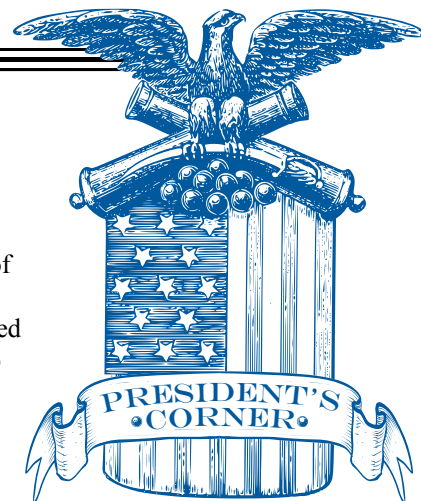


To The Membership,

I'm sure you will all join me in looking back on 2018 as a good year for our Society. Our membership increased slightly and our Treasury closed out the year in strong position. As a reminder, the Board voted to return a portion of our financial strength to you in the form of waived membership dues for 2019 for all members in good standing as of the close of 2018. On Jack Urish's recommendation the purchase price for stamps from Jack's Albums was reduced from 18% to 17% of current Scott catalogue price, further enhancing this valuable membership benefit.

I wish to thank my fellow officers, directors, and committee chairman for their superb contributions to the continued success of our club, and I thank all of our members for your attendance and participation that makes it all worthwhile.
Happy collecting in 2019!

Geoff Owens
President



MEMBERSHIP

Membership is open to anyone of good character who is interested in stamps and learning more about them. Annual dues for membership are \$12.00

CLUB MEETINGS SCHEDULE.

Meetings are held second and fourth Wednesday of each month. 7:30 pm
Edgemere Retirement Center
8523 Thackery Dallas, TX

UPCOMING SHOWS

January 4-5

HOUSTON TSDA, Crowne Plaza
Hotel, 7611 Katy Freeway (IH-10 West),
Houston, TX 77024. (Friday 10-5,
Saturday 9-4)

March 15-16

DALLAS TSDA, Richardson Civic
Center, 411 W. Arapaho Rd, Richardson,
TX 75080-4551 (Friday 10-5, Saturday
9-4)

March 22-23

HOUSTON TSDA, Crowne Plaza
Hotel, 7611 Katy Freeway (IH-10 West),
Houston, TX 77024. (Friday 10-5,
Saturday 9-4)

May 17-18

SAN ANTONIO TSDA, Norris
Conference Center, 618 Northwest
Freeway Loop 410, Suite 207 (across San
Pedro from NorthStar Mall), San Antonio,
TX 78216 (Friday 10-5, Saturday 9-4).

May 31 – June 1

HOUSTON TSDA, Crowne Plaza
Hotel, 7611 Katy Freeway (IH-10 West),
Houston, TX 77024. (Friday 10-5,
Saturday 9-4)

June 21-22

DALLAS TSDA, Richardson Civic
Center, 411 W. Arapaho Rd, Richardson,
TX 75080-4551 (Friday 10-5, Saturday
9-4)

June 28-29

OKPEX 2019, Reed Conference Center,
I-40@Sooner Road, Oklahoma City, OK
(Friday 10-6, Saturday 10-4)

July 27-28

ARK-LA-TX Annual Show, Bossier City
Civic Center, 620 Benton Road, Bossier
City, LA (Saturday 9-6, Sunday 9-3)

SPECIAL THANKS TO

President:
Geoff Owens

Vice President:
Stan Bartnikowski

Secretary:
Joe Baker

Treasurer:
Rod Gabel

Directors:
Bill Laupus
Ivan Zuniuga



Find Us Online at

STAMPS.ORG/DALLAS



Instagram DALLAS_STAMP



@DALLASSTAMP

